



**Customer:** Dr Cass  
**Address:** 6370 W. Emerald Parkway  
 Monee, IL 60449  
**Sample ID:** 25mg Full Spectrum Chocolate  
**Matrix:** Square Edible  
**Labnumber:** 21B0261-03 Total mass or volume per unit (g or mL): 5.120

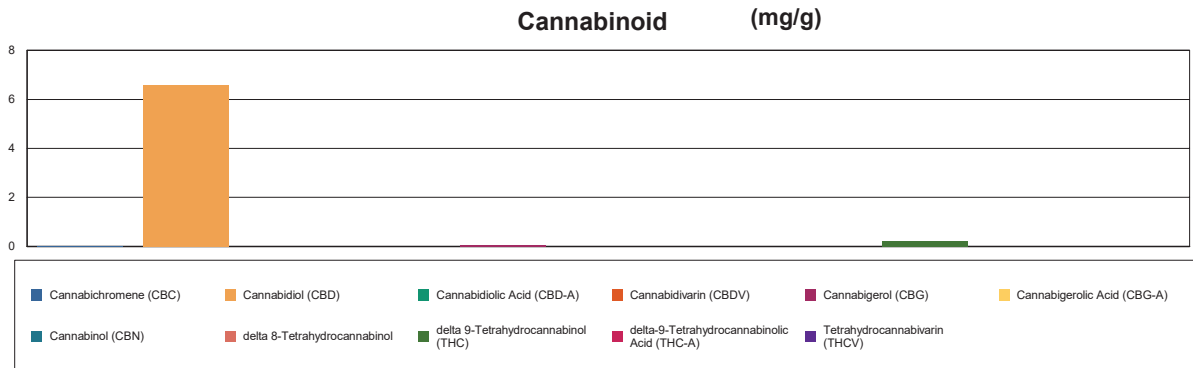
## Cannabinoid Profile

**Test Conditions:** 19°C  
**Extraction Technician:** SH  
**Analytical Chemist:** CB

Extraction Date(s)	Analysis Date(s)
3/10/2024	3/11/2024

Cannabinoids (HPLC)		Results		
	LOD (mg/g)	%	mg/g	mg/square
Cannabidiol (CBD)	<0.006			
Cannabidiolic Acid (CBD-A)	<0.006			
Cannabigerolic Acid (CBG-A)	<0.006			
Cannabigerol (CBG)		0.008	0.076	0.387
Cannabidiol (CBD)		0.66	6.60	33.8
Tetrahydrocannabivarin (THCV)	<0.006			
Cannabinol (CBN)	<0.006			
delta 9-Tetrahydrocannabinol (THC)		0.02	0.222	1.13
delta 8-Tetrahydrocannabinol	<0.006			
Cannabichromene (CBC)		0.002	0.020	0.101
delta-9-Tetrahydrocannabinolic Acid (THC-A)	<0.006			
Cannabinoids Total		%	mg/g	
Max Active THC		0.02	0.22	
Max Active CBD		0.66	6.60	
T.Active Cannabinoids		0.69	6.92	
Total Cannabinoids		0.69	6.92	

Following USDA guidelines on uncertainty, Altitude Consulting's uncertainty is calculated to be +/- 2% for all cannabinoids using a coverage factor of 2 (95% confidence interval). Measurement uncertainty has not been factored into reported values.



**Gary Brook - Laboratory Director - 3/11/2024**

Reporting Limits will vary based on sample extraction weight used for the analysis.

Altitude Consulting, LLC utilizes NIST traceable Reference Standards and Certified Reference Material to calibrate analytical instruments along with proven analytical methods. The methods are applied in the most ethical manner following good laboratory practice guidelines. The results of this report are based solely on the sample submitted and cannot be reproduced. Decision Rule: Measurement uncertainty is not accounted for in the reported values. Results are based solely on calculated numbers. Altitude Consulting makes no

Statements of conformity.